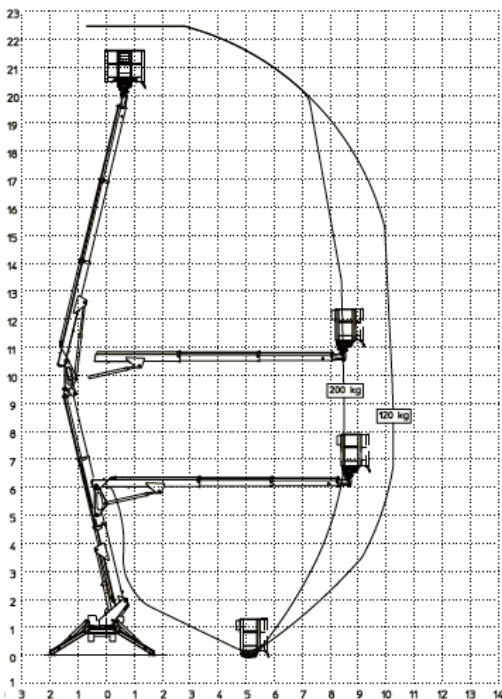


Multitel SMX225

Lightweight & compact



- Dual power source - mains electric or diesel - can work indoors or out
- Very flexible setup due to multi-position outriggers
- Unrestricted slew function even on narrow setup



Multitel SMX225

Working Height (max.) (m)	22.40m
Platform Height (max.) (m)	20.40m
Lateral Outreach (max.) (m) / (kg)	10.25m / 8.50
Safe Load on Cage (max.) (kg)	200m / 120
Cage Rotation	180°
Range of Rotation	360°
Limited Range of Rotation - one side narrow	ONLY LIMIT TO OUTREACH NOT ROTATION
Limited Range of Rotation - both sides narrow	ONLY LIMIT TO OUTREACH NOT ROTATION
Cage Dimensions (L x W x H) (m)	1.4 X 0.7 X 1.1m
Removable Cage	Y
Length in Travelling Position with Cage (min.) (m)	5.20m
Length in Travelling Position without Cage (min.) (m)	5.08m
Width in Travelling Position with Cage (min.)	1.40m
Width in Travelling Position without Cage (min.) (m)	0.98m
Height in Travelling Position (min.) (m)	1.98m
Net Weight (kg)	2,500
Setup Width - Standard - to outside edge of outrigger foot (m)	3.82m
Setup Length - Standard - to outside edge of outrigger foot (m)	4.03m
Setup Width - One Side Narrow - to outside edge of outrigger foot (m)	3.48m
Setup Width - Both Sides Narrow - to outside edge of outrigger foot (m)	3.15m
Power Supply - model specific, please ask.	240V & Diesel
Climbing Ability	25%
Setup Ability	11%
Maximum Point Load (N)	17,500
Load on 400mm pad (N/cm ²)	10.938
Load on 600mm pad (N/cm ²)	4.861
Load on 800mm pad (N/cm ²)	2.734
Live load in setup position (KN/m ²)	1.593
Traffic Live Load (KN/m ²)	5.370
Adjustable Track Height/Width	N
Drive Control	Umbilical
Drive Speed	1.40km/h

DISCLAIMER

The information on this page is for guidance only and is subject to change without prior notice in line with the Manufacturer's Development Program. Higher Access and its suppliers cannot be held liable for any damage or injury sustained through use of this information to specify equipment.