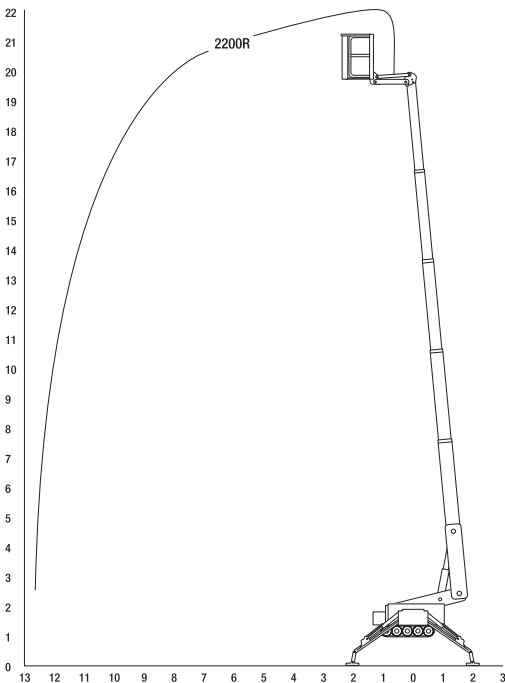


Omme 2350RBDJ

Fast, flexible & efficient.



- Unrivalled 40% gradeability - ideal for working on slopes
- Three power sources - diesel engine, mains or battery - can work outdoors or in
- Robust design and construction - ideal for construction work



HigherAccess
Spider Lift Hire Specialists

08456 044 054 www.higheraccess.co.uk

Omme 2350RBDJ

| | |
|--|----------------------|
| Working Height (max.) - With moveable fly jib (m) | 23.20m |
| Platform Height (max.) (m) | 21.20m |
| Lateral Outreach (max.) (m) | 12.20m |
| Safe Load on Cage (max.) (kg) | 200 |
| Cage Rotation | +/-40° |
| Range of Rotation | +/- 400° |
| Limited Range of Rotation - one side narrow | 200° |
| Limited Range of Rotation - both sides narrow | 45° |
| Cage Dimensions (L x W x H) (m) | 1.25 x 0.8 x 1.1m |
| Removable Cage | N |
| Length in Travelling Position (min.) (m) | 6.56m |
| Width in Travelling Position (min.) (m) | 1.10m |
| Height in Travelling Position (min.) (m) | 1.99m |
| Net Weight (kg) | 3,050 |
| Setup Width - Standard - to outside edge of outrigger foot (m) | 5.32m |
| Setup Length - Standard - to outside edge of outrigger foot (m) | 5.32m |
| Setup Width - One Side Narrow - to outside edge of outrigger foot (m) | 4.27m |
| Setup Length - One Side Narrow - to outside edge of outrigger foot (m) | 6.64m |
| Setup Width - Both Sides Narrow - to outside edge of outrigger foot (m) | 3.21m |
| Setup Length - Both Sides Narrow - to outside edge of outrigger foot (m) | 6.64m |
| Power Supply | Diesel |
| Battery | |
| Climbing Ability | 35% |
| Setup Ability | 40% |
| Maximum Point Load (N) | 25,000 |
| Load on 400mm Pad (N/cm ²) | 15.625 |
| Load on 600mm Pad (N/cm ²) | 6.944 |
| Load on 800mm Pad (N/cm ²) | 3.906 |
| Live Load in Setup Position (KN/m ²) | 1.057 |
| Traffic Live Load (KN/m ²) | 4.250 |
| Adjustable Track Height/Width | N |
| Drive Control | Radio Remote Control |
| Drive Speed | 1.50km/h |

DISCLAIMER

The information on this page is for guidance only and is subject to change without prior notice in line with the Manufacturer's Development Program. Higher Access and its suppliers cannot be held liable for any damage or injury sustained through use of this information to specify equipment.