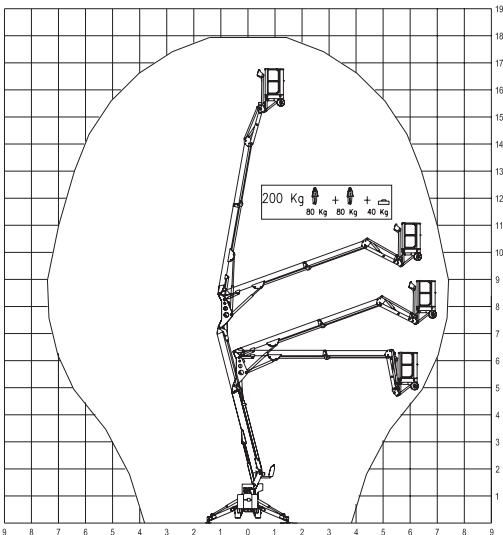


# Teupen Leo 18GT

Compact & capable  
all-rounder.



- Dual power source - mains electric or diesel - can work indoors or out
- Height & width adjustable crawler tracks - great ground clearance for rough terrain
- 28% gradeability - excellent for working on slopes



**HigherAccess**  
Spider Lift Hire Specialists

08456 044 054 [www.higheraccess.co.uk](http://www.higheraccess.co.uk)

# Teupen Leo 18GT

Working Height (max.)	17.90m
Platform Height (max.)	15.90m
Lateral Outreach (max.)	7.60m
Safe Load on Cage (max.)	200kg
Cage Rotation	None
Range of Rotation	355°
Limited Range of Rotation - one side narrow	Not Possible
Limited Range of Rotation - both sides narrow	Not Possible
Cage Dimensions (L x W x H) (m)	1.2 x 0.7 x 1.1m
Removable Cage	Y
Length in Travelling Position with Cage (min.)	4.71m
Length in Travelling Position without Cage (min.)	4.00m
Width in Travelling Position with Cage (min.)	1.20m
Width in Travelling Position without Cage (min.)	0.78m
Height in Travelling Position (min.)	1.995m
Net Weight	2330kg
Setup Width - Standard - to outside edge of outrigger foot	3.10m
Setup Length - Standard - to outside edge of outrigger foot	4.10m
Setup Width - One Side Narrow - to outside edge of outrigger foot	Not Possible
Setup Width - Both Sides Narrow - to outside edge of outrigger foot	Not Possible
Power Supply	Diesel
	240V Electric - 13A 3 Pin Plug
Climbing Ability	28%
Setup Ability	10%
Maximum Point Load (N)	13550
Load on 400mm Pad (N/cm <sup>2</sup> )	8.47
Load on 600mm Pad (N/cm <sup>2</sup> )	3.76
Load on 800mm Pad (N/cm <sup>2</sup> )	2.12
Live Load in Setup Position (KN/m <sup>2</sup> )	1.80
Traffic Live Load (KN/m <sup>2</sup> )	4.85
Adjustable Track Height/Width	Manual - 0.1m Height/Width Adjustment
Drive Control	From Basket
Drive Speed	1.50km/h

## DISCLAIMER

The information on this page is for guidance only and is subject to change without prior notice in line with the Manufacturer's Development Program. Higher Access and its suppliers cannot be held liable for any damage or injury sustained through use of this information to specify equipment.