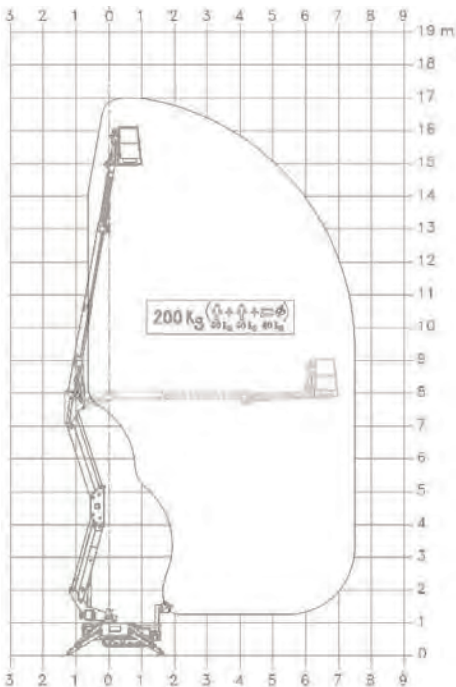


CTE CS170

Small transport dimensions with unrivalled outreach.



- Dual power source - mains electric or diesel - can work indoors or out
- 31% gradeability - excellent for working on slopes
- Small transport dimensions - will fit through a single doorway



HigherAccess
Spider Lift Hire Specialists

08456 044 054 www.higheraccess.co.uk

CTE CS170

Working Height (max.)	17.00m
Platform Height (max.)	15.00m
Lateral Outreach (max.)	7.50m
Safe Load on Cage (max.)	200kg
Cage Rotation	None
Range of Rotation	330°
Limited Range of Rotation - one side narrow	Not Possible
Limited Range of Rotation - both sides narrow	Not Possible
Cage Dimensions (L x W x H) (m)	1.3 x 0.7 x 1.1
Removable Cage	Y
Length in Travelling Position with Cage (min.)	4.25m
Length in Travelling Position without Cage (min.)	3.55m
Width in Travelling Position with Cage (min.)	1.30m
Width in Travelling Position without Cage (min.)	0.78m
Height in Travelling Position (min.)	2.00m
Net Weight	2,000kg
Setup Width - Standard - to outside edge of outrigger foot	3.18m
Setup Length - Standard - to outside edge of outrigger foot	3.15m
Setup Width - One Side Narrow - to outside edge of outrigger foot	Not Possible
Setup Width - Both Sides Narrow - to outside edge of outrigger foot	Not Possible
Power Supply - model specific, please ask.	Diesel
	110V Electric - 32A Yellow Plug
Climbing Ability	31%
Setup Ability	12%
Maximum Point Load (N)	15,000
Load on 400mm pad (N/cm ²)	9.375
Load on 600mm pad (N/cm ²)	4.167
Load on 800mm pad (N/cm ²)	2.344
Live Load in Setup Position (KN/m ²)	1.959
Traffic Live Load (KN/m ²)	5.919
Drive Control	Umbilical Remote Control
Drive Speed	1.50km/h

DISCLAIMER

The information on this page is for guidance only and is subject to change without prior notice in line with the Manufacturer's Development Program. Higher Access and its suppliers cannot be held liable for any damage or injury sustained through use of this information to specify equipment.