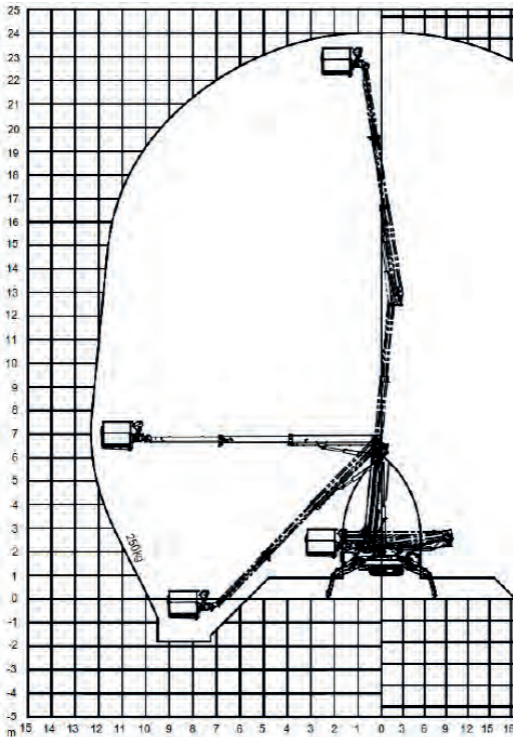


HALEO24

Unrivalled up and over outreach.



- 250kg unrestricted safe working load
- Less than 1m wide in transport position
- 230v mains electric or powerful diesel engine



HigherAccess
Spider Lift Hire Specialists

08456 044 054 www.higheraccess.co.uk

HALEO24

| | |
|---|-------------------|
| Working height | 24.00m |
| Platform height | 22.00m |
| Lateral outreach | 12.70m |
| Safe load on cage | 250kg |
| Cage rotation | 180° |
| Range of rotation | 450° |
| Limited range of rotation - one side narrow | 192° |
| Limited range of rotation - both sides narrow | 30° |
| Cage dimensions | 1.1x 0.8 x 1.2m |
| Removable cage | Y |
| Length in travelling position with cage | 6.40m |
| Length in travelling position without cage | 5.05m |
| Width in travelling position with cage | 0.99m |
| Width in travelling position without cage | 0.99m |
| Height in travelling position | 2.00m |
| Net weight | 3,300kg |
| Setup width standard | 4.70m |
| Setup length standard | 4.70m |
| Setup width - one side narrow | 3.65m |
| Setup width - both sides narrow | 2.65m |
| Power supply | Kubota Diesel |
| | 230v electric |
| | 13A 3 pin plug |
| Climbing ability | 19° |
| Setup ability | 16.7° |
| Maximum point load (kN) | 23.70 |
| Load on 400mm pad (kN/cm ²) | 148.13 |
| Load on 600mm pad (kN/cm ²) | 65.83 |
| Load on 800mm pad (kN/cm ²) | 37.03 |
| Adjustable track Height/Width | Hydraulic - 0.19m |
| Drive control | Radio remote |
| Drive speed | 4.0 km/h |

DISCLAIMER

The information on this page is for guidance only and is subject to change without prior notice in line with the Manufacturer's Development Program. Higher Access and its suppliers cannot be held liable for any damage or injury sustained through use of this information to specify equipment.