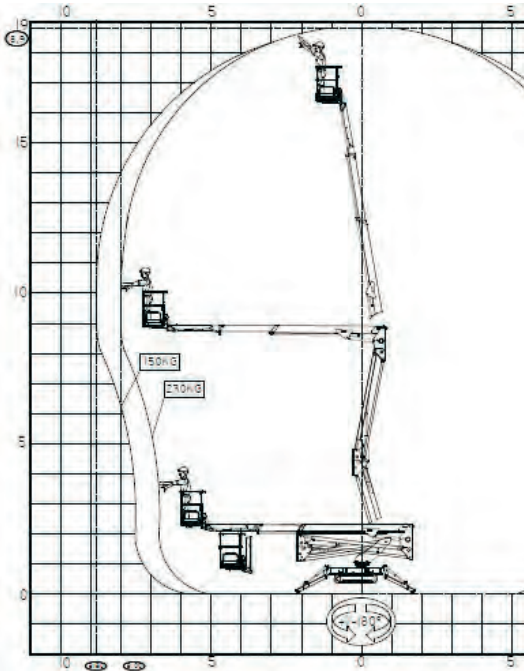


CMC S19

Simple set up and operation.



- Dual power source - mains (110v or 230v) or diesel engine
- Less than 800mm wide - will fit through a standard single door
- Up to 36% gradeability



HigherAccess
Spider Lift Hire Specialists

08456 044 054 www.higheraccess.co.uk

CMC S19

Working height	18.80m
Platform height	16.80m
Lateral outreach	8.80m
Safe load on cage	230kg
Cage rotation	N/A
Range of rotation	356°
Limited range of rotation - one side narrow	N/A
Limited range of rotation - both sides narrow	N/A
Cage dimensions	1.4x0.7x1.1m
Removable cage	Y
Length in travelling position with cage	5.12m
Length in travelling position without cage	4.48m
Width in travelling position with cage	1.40m
Width in travelling position without cage	0.78m
Height in travelling position	1.97m
Net weight	2,500kg
Setup width standard	3.58m
Setup length standard	2.98m
Setup width - one side narrow	-
Setup width - both sides narrow	-
Power supply	Kubota Diesel
	230v electric
	110v electric
Climbing ability	20°
Setup ability	11°
Maximum point load (N)	15,000
Load on 400mm pad (N/cm ²)	9.38
Load on 600mm pad (N/cm ²)	4.17
Load on 800mm pad (N/cm ²)	2.34
Live load in setup position (kN/m ²)	2.01
Traffic live load (kN/m ²)	3.06
Adjustable track height/width	No
Drive control	Umbilical remote
Drive speed	1.06km/h

DISCLAIMER

The information on this page is for guidance only and is subject to change without prior notice in line with the Manufacturer's Development Program. Higher Access and its suppliers cannot be held liable for any damage or injury sustained through use of this information to specify equipment.