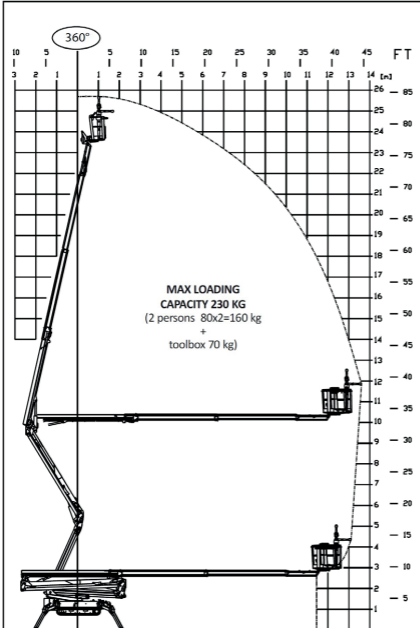


# Hinowa 26.14

Operator friendly, up and over outreach



- Dual power source - mains (110v or 230v) or diesel engine
- 230kg unrestricted safe working load
- Self levelling for ease of setup



**HigherAccess**  
Spider Lift Hire Specialists

08456 044 054 [www.higheraccess.co.uk](http://www.higheraccess.co.uk)

# Hinowa 26.14

Working height (max.)	25.70m
Platform height (max.)	23.70m
Lateral outreach (max.)	13.75m
Safe load on cage (max.)	230kg
Cage rotation	124°
Range of rotation	360°
Limited range of rotation - one side narrow	210°
Limited range of rotation - both sides narrow	60°
Cage dimensions (L x W x H)	1.3 x 0.7 x 1.1m
Removable cage	Y
Length in travelling position with cage (min.)	6.34m
Length in travelling position without cage (min.)	5.98m
Width in travelling position with cage (min.)	1.48m
Width in travelling position without cage (min.)	0.99m
Height in travelling position (min.)	1.98m
Net weight	4,365kg
Setup width standard	4.28m
Setup length standard	4.38m
Setup width - one side narrow	3.54m
Setup width - both sides narrow	2.80m
Power supply	Diesel 110v Mains 240v Mains
Climbing ability	16°
Setup ability	16°
Maximum point load (N)	31,240
Load on 400mm pad (N/cm <sup>2</sup> )	19.53
Load on 600mm pad (N/cm <sup>2</sup> )	8.68
Load on 800mm pad (N/cm <sup>2</sup> )	4.88
Live load in setup position (kN/m <sup>2</sup> )	2.45
Traffic live load (kN/m <sup>2</sup> )	7.75
Adjustable track height/width	Y
Drive control	Wired
Drive speed	1.20km/hr

## DISCLAIMER

The information on this page is for guidance only and is subject to change without prior notice in line with the Manufacturer's Development Program. Higher Access and its suppliers cannot be held liable for any damage or injury sustained through use of this information to specify equipment.