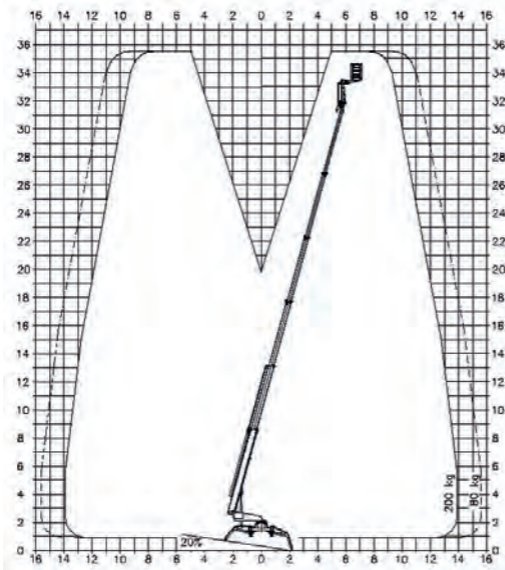


# HALEO36

The lightweight,  
flexible giant.



- Dual power source - mains electric or diesel - can work indoors or out
- Large hydraulically adjustable tracks give great ground clearance - perfect for rough terrain
- Radio remote control - allows operator to remain a safe distance away during setup



**HigherAccess**  
Spider Lift Hire Specialists

08456 044 054 [www.higheraccess.co.uk](http://www.higheraccess.co.uk)

# HALEO36

Working Height (max.) (m)	35.50m
Platform Height (max.) (m)	33.50m
Lateral Outreach (max.) with 80kg (m)	15.20m
with 200kg (m)	13.50m
Safe Load on Cage (kg)	200kg
Cage Rotation	180°
Range of Rotation	450°
Limited Range of Rotation - one side narrow	180°
Setting the outriggers to narrow also limits the working height to 29.00m	
Limited Range of Rotation - both sides narrow	Not possible
Cage Dimensions (L x W x H) (m)	1.2 x 0.8 x 1.1m
Removable Cage	N
Length in Travelling Position (min.) (m)	8.10m
Width in Travelling Position (min.) (m)	1.58m
Height in Travelling Position (min.) (m)	1.98m
Net Weight (kg)	4,800
Setup Width - Standard - to outside edge of outrigger foot (m)	4.89m
Setup Length - Standard - to outside edge of outrigger foot (m)	4.34m
Setup Width - One Side Narrow - to outside edge of outrigger foot (m)	3.77m
Power Supply	Diesel
	240V Electric
Climbing Ability	11°
Setup Ability	11°
Maximum Point Load (kN)	35.00
Load on 400mm Pad (kN/cm <sup>2</sup> )	218.75
Load on 600mm Pad (kN/cm <sup>2</sup> )	97.22
Load on 800mm Pad (kN/cm <sup>2</sup> )	54.69
Adjustable Track Height/Width	Hydraulic - 0.22m Height Adjustment
Drive Speed	3.00km/h
Drive Control	Radio Remote Control

## DISCLAIMER

The information on this page is for guidance only and is subject to change without prior notice in line with the Manufacturer's Development Program. Higher Access and its suppliers cannot be held liable for any damage or injury sustained through use of this information to specify equipment.