

Skako FS320Z

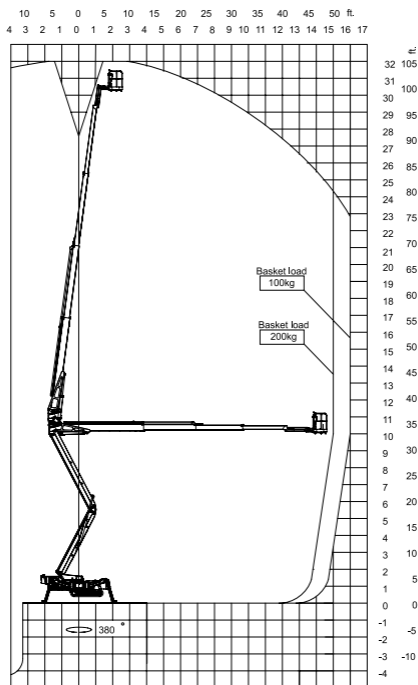
FULL SPEC
OVERLEAF



Powerful, flexible & economical.



- Unrivalled 16m of up and over outreach with 100kg SWL
- Dual power source - mains electric or diesel - can work indoors or out
- Multi-position outriggers offer extremely flexible setup



Skako FS320Z

Working Height (max.) (m)	32.00
Platform Height (max.) (m)	30.00
Lateral Outreach (max.) (m)	16.00
Safe Load on Cage (kg)	200
Cage Rotation	+/-45°
Range of Rotation	375°
Limited Range of Rotation - one side narrow	-
Limited Range of Rotation - both sides narrow	-
Cage Dimensions (L x W x H) (m)	0.8 x 1.4 x 1.323
Removable Cage	Y
Length in Travelling Position with Cage (min.) (m)	7.65
Length in Travelling Position without Cage (min.) (m)	7.00
Width in Travelling Position with Cage (min.) (m)	1.50
Width in Travelling Position without Cage (min.) (m)	1.10
Height in Travelling Position (min.) (m)	2.27
Net Weight (kg)	5,900
Setup Width - Standard - to outside edge of outrigger foot	4.60
Setup Length - Standard - to outside edge of outrigger foot (m)	4.60
Setup Width - One Side Narrow - to outside edge of outrigger foot (m)	4.10
Setup Width - Both Sides Narrow - to outside edge of outrigger foot (m)	3.60
Power Supply	Diesel/240v
Climbing Ability	37%
Setup Ability	37%
Maximum Point Load (N)	26,500
Load on 400mm Pad (N/cm ²)	16.563
Load on 600mm Pad (N/cm ²)	7.361
Load on 800mm Pad (N/cm ²)	4.141
Live Load in Setup Position (KN/m ²)	2.735
Traffic Live Load (KN/m ²)	6.878
Adjustable Track Height/Width	1.1 - 1.5m
Drive Control	Portable Control Panel
Max Drive Speed (Diesel/Battery)	2.7 / 0.7km/h

DISCLAIMER

The information on this page is for guidance only and is subject to change without prior notice in line with the Manufacturer's Development Program. Higher Access and its suppliers cannot be held liable for any damage or injury sustained through use of this information to specify equipment.