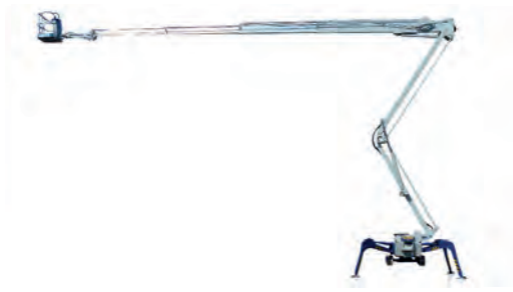
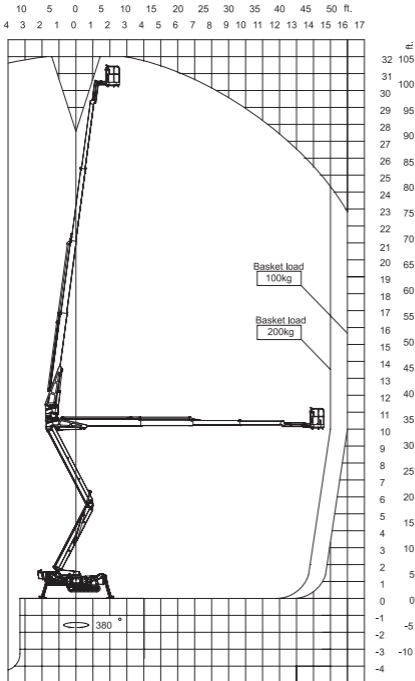


# HAFS320Z

Powerful, flexible & economical.



- Unrivalled 16m of up and over outreach with 100kg SWL
- Dual power source - mains electric or diesel - can work indoors or out
- Multi-position outriggers offer extremely flexible setup



**HigherAccess**  
Spider Lift Hire Specialists

08456 044 054 [www.higheraccess.co.uk](http://www.higheraccess.co.uk)

# HAFS320Z

Working Height (max.) (m)	32.00m
Platform Height (max.) (m)	30.00m
Lateral Outreach (max.) (m)	16.00m
Safe Load on Cage (kg)	200kg
Cage Rotation	+/-45°
Range of Rotation	375°
Limited Range of Rotation - one side narrow	-
Limited Range of Rotation - both sides narrow	-
Cage Dimensions (L x W x H) (m)	0.8 x 1.4 x 1.323m
Removable Cage	Y
Length in Travelling Position with Cage (min.) (m)	7.65m
Length in Travelling Position without Cage (min.) (m)	7.00m
Width in Travelling Position with Cage (min.) (m)	1.50m
Width in Travelling Position without Cage (min.) (m)	1.10m
Height in Travelling Position (min.) (m)	2.27m
Net Weight (kg)	5,900
Setup Width - Standard - to outside edge of outrigger foot	4.60m
Setup Length - Standard - to outside edge of outrigger foot (m)	4.60m
Setup Width - One Side Narrow - to outside edge of outrigger foot (m)	4.10m
Setup Width - Both Sides Narrow - to outside edge of outrigger foot (m)	3.60m
Power Supply	Diesel/240v
Climbing Ability	20°
Setup Ability	20°
Maximum Point Load (kN)	26.50
Load on 400mm Pad (kN/cm <sup>2</sup> )	165.63
Load on 600mm Pad (kN/cm <sup>2</sup> )	73.61
Load on 800mm Pad (kN/cm <sup>2</sup> )	41.41
Adjustable Track Height/Width	1.1 - 1.5m
Drive Control	Radio remote / umbilical
Max Drive Speed (Diesel/Battery)	2.7 / 0.7km/h

## DISCLAIMER

The information on this page is for guidance only and is subject to change without prior notice in line with the Manufacturer's Development Program. Higher Access and its suppliers cannot be held liable for any damage or injury sustained through use of this information to specify equipment.