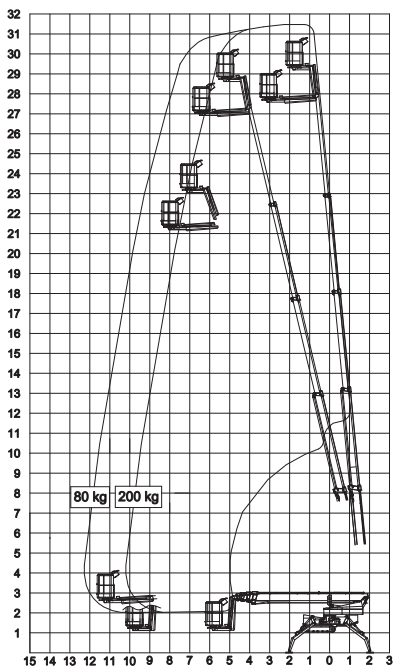


# Omme 3150RBDJ

Fast, flexible & efficient.



- Unrivalled 40% gradeability - ideal for working on slopes
- Three power sources - diesel engine, mains or battery - can work outdoors or in
- Robust design and construction - ideal for construction work



# Omme 3150 RBDJ

Working Height (max.) (m)	31.1m
Platform Height (max.) (m)	29.1m
Lateral Outreach (max.) (m)	12.6m
Safe Load on Cage (max.) (kg)	200
Cage Rotation	2 x 40°
Range of Rotation	2 x 355°
Limited Range of Rotation - one side narrow	190°
Limited Range of Rotation - both sides narrow	20°
Cage Dimensions (L x W x H) (m)	1.25 x 0.8 x 1.1m
Removable Cage	Y
Length in Travelling Position with Cage (min.) (m)	8.17m
Length in Travelling Position without Cage (min.) (m)	7.57m
Width in Travelling Position with Cage (min.) (m)	1.25m
Width in Travelling Position without Cage (min.) (m)	1.10m
Height in Travelling Position (min.) (m)	1.99m
Net Weight (kg)	3,995
Setup Width - Standard - to outside edge of outrigger foot (m)	Min. 4.59 - Max. 5.32m
Setup Length - Standard - to outside edge of outrigger foot (m)	Min. 4.59 - Max. 5.32m
Setup Width - One Side Narrow - to outside edge of outrigger foot (m)	Min. 3.72 - Max. 4.27m
Setup Width - Both Sides Narrow - to outside edge of outrigger foot (m)	Min. 2.85 - Max. 3.21m
Power Supply - model specific, please ask.	110V-16A & 240V-13A Dual Charge
	Kubota Diesel D722
	2 x (4x6V) 400Ah-5h Battery Pack
Climbing Ability	35%
Setup Ability	40%
Maximum Point Load (N)	25,000
Load on 400mm Pad (N/cm <sup>2</sup> )	15.625
Load on 600mm Pad (N/cm <sup>2</sup> )	6.944
Load on 800mm Pad (N/cm <sup>2</sup> )	3.906
Live Load in Setup Position (KN/m <sup>2</sup> )	1.343
Traffic Live Load (KN/m <sup>2</sup> )	4.230
Adjustable Track Height/Width	N
Drive Control	Wireless Remote
Drive Speed	Max. 1.45km/h

## DISCLAIMER

The information on this page is for guidance only and is subject to change without prior notice in line with the Manufacturer's Development Program. Higher Access and its suppliers cannot be held liable for any damage or injury sustained through use of this information to specify equipment.