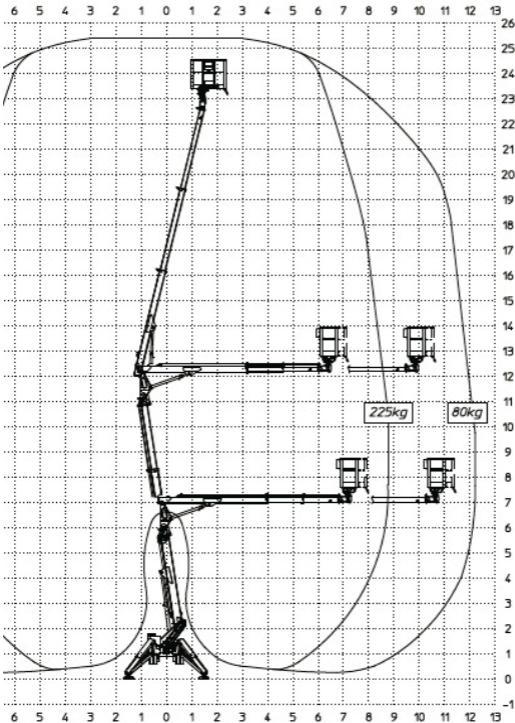


# Multitel SMX 250HD

Flexibility in an extremely compact package.



- Heavy duty chassis with great ground clearance for rough terrain
- 225kg safe working load in the cage
- Increased tracking speed of 3.2km/hr



**HigherAccess**  
Spider Lift Hire Specialists

08456 044 054 [www.higheraccess.co.uk](http://www.higheraccess.co.uk)

## Multitel SMX 250HD

Working height	25.2m
Platform height	23.2m
Lateral outreach	12.2 m with 225kg
Safe load on cage	225kg
Cage rotation	180°
Range of rotation	360°
Limited range of rotation - one side narrow	-
Limited range of rotation - both sides narrow	-
Cage dimensions	1.4 x 0.7 x 1.1m
Removable cage	N
Length in travelling position with cage	5.25m
Length in travelling position without cage	-
Width in travelling position with cage	1.65m
Width in travelling position without cage	-
Height in travelling position	2.4m
Net weight	4,000KG
Setup width standard	5.58m
Setup length standard	5.02m
Setup width - one side narrow	-
Setup width - both sides narrow	-
Power supply	Kubota Diesel
Climbing ability	14°
Setup ability	14°
Maximum point load (N)	25,000
Load on 400mm pad (N/cm <sup>2</sup> )	15.625
Load on 600mm pad (N/cm <sup>2</sup> )	6.944
Load on 800mm pad (N/cm <sup>2</sup> )	3.906
Live load in setup position (kN/m <sup>2</sup> )	2.383
Traffic live load (kN/m <sup>2</sup> )	4.53
Adjustable track height/width	No
Drive control	Radio remote
Drive speed	3.2km/h

### DISCLAIMER

The information on this page is for guidance only and is subject to change without prior notice in line with the Manufacturer's Development Program. Higher Access and its suppliers cannot be held liable for any damage or injury sustained through use of this information to specify equipment.