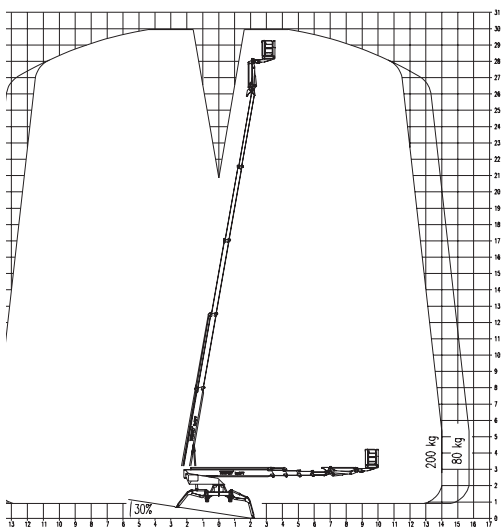


Teupen Leo 30T

Lightweight, go-anywhere capability.



- Rubber crawler tracks and light weight - minimal ground pressure, ideal for fragile floors and lifting into position
- Dual power source - can work indoors or out
- Small transport dimensions allow double door access
- Variable jacking widths for difficult areas
- 30% gradeability - great for working on inclines
- Hydraulically adjustable crawler tracks



HigherAccess
Spider Lift Hire Specialists

08456 044 054 www.higheraccess.co.uk

Teupen Leo 30T

Working Height (max.) (m)	30.00m
Platform Height (max.) (m)	28.00m
Lateral Outreach (max.) with 80kg	15.70
with 200kg	14.00
Safe Load on Cage (kg)	200
Cage Rotation	180°
Range of Rotation	450°
Limited Range of Rotation - one side narrow	220°
Limited Range of Rotation - both sides narrow	40°
Cage Dimensions (L x W x H) (m)	1.2 x 0.8 x 1.1m
Removable Cage	N
Length in Travelling Position (min.) (m)	7.20m
Width in Travelling Position (min.) (m)	1.58m
Height in Travelling Position (min.) (m)	1.98m
Net Weight (kg)	4,200
Setup Width - Standard - to outside edge of outrigger foot (m)	4.89m
Setup Length - Standard - to outside edge of outrigger foot (m)	4.34m
Setup Width - One Side Narrow - to outside edge of outrigger foot (m)	3.77m
Setup Width - Both Sides Narrow - to outside edge of outrigger foot (m)	2.89m
Power Supply	Diesel
	240V Electric - 13A 3 Pin Plug
Climbing Ability	30%
Setup Ability	30%
Maximum Point Load (N)	26,000
Load on 400mm Pad (N/cm ²)	16.250
Load on 600mm Pad (N/cm ²)	7.222
Load on 800mm Pad (N/cm ²)	4.063
Live Load in Setup Position (KN/m ²)	1.941
Traffic Live Load (Kn/M ²)	3.622
Adjustable Track Height/Width	Hydraulic - 0.2m height adjustment
Drive Control	Radio remote control
Drive Speed	3.00km/h
Drive Control	Radio remote control
Drive Speed	2.00km/h

DISCLAIMER

The information on this page is for guidance only and is subject to change without prior notice in line with the Manufacturer's Development Program. Higher Access and its suppliers cannot be held liable for any damage or injury sustained through use of this information to specify equipment.