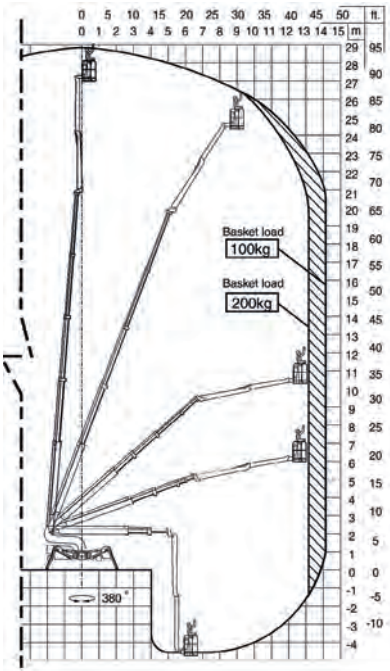


Falcon Spider FS290

The wheeled spider with great flexibility.



- Sets the standard in narrow access equipment
- The articulated jib gives great flexibility in work positioning
- Works on slopes, embankments and walls
- Can access the most challenging of internal spaces



HigherAccess
Spider Lift Hire Specialists

08456 044 054 www.higheraccess.co.uk

Falcon Spider FS290

Working Height (max.) (m)	29.0m
Platform Height (max.) (m)	27.0m
Lateral Outreach (max.) (m)	13.0 / 14.00
Safe Load on Cage (max.) (kg)	200 / 100
Cage Rotation	180°
Range of Rotation	380°
Limited Range of Rotation - one side narrow	380°
Limited Range of Rotation - both sides narrow	380°
Cage Dimensions (L x W x H) (m)	1.4 x 0.8 x 1.2
Removable Cage	Y
Length in Travelling Position with Cage (min.) (m)	7.03m
Length in Travelling Position without Cage (min.) (m)	6.50m
Width in Travelling Position with Cage (min.) (m)	1.40m
Width in Travelling Position without Cage (min.) (m)	0.80m
Height in Travelling Position (min.) (m)	1.98m
Net Weight (kg)	3,750
Setup Width - Standard - to outside edge of outrigger foot (m)	5.34m
Setup Length - Standard - to outside edge of outrigger foot (m)	3.58m
Setup Width - One Side Narrow - to outside edge of outrigger foot (m)	4.50m
Setup Width - Both Sides Narrow - to outside edge of outrigger foot (m)	3.50m
Power Supply - model specific, please ask.	Diesel / Petrol / 240V / Battery / 110V
Climbing Ability	18%
Setup Ability	30%
Maximum Point Load (N)	19,200
Load on 400mm pad (N/cm ²)	12.000
Load on 600mm pad (N/cm ²)	5.333
Load on 800mm pad (N/cm ²)	3.000
Live Load in Setup Position (KN/m ²)	1.772
Traffic Live Load (KN/m ²)	4.252
Drive Control	Steering Handle
Adjustable Wheel Width	Y

DISCLAIMER

The information on this page is for guidance only and is subject to change without prior notice in line with the Manufacturer's Development Program. Higher Access and its suppliers cannot be held liable for any damage or injury sustained through use of this information to specify equipment.