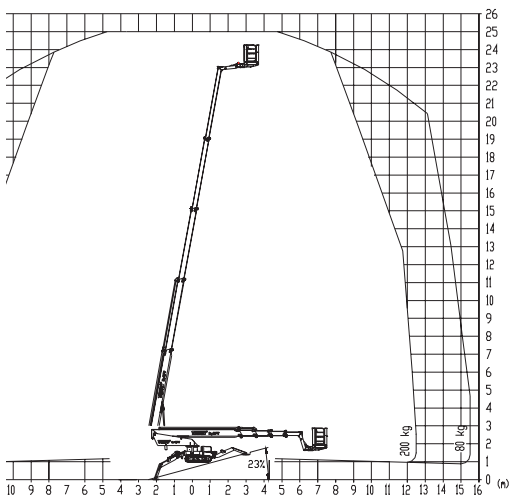


Teupen Leo 25T

Compact, slim platform
with extreme flexibility.



- Excellent up and over outreach
- Rubber crawler tracks and light weight - minimal ground pressure, ideal for fragile floors and lifting into position
- Dual power source - can work indoors or out
- Small transport dimensions - will go through a single doorway
- Optional non-marking tracks for delicate floor surfaces
- Continuous 180° basket rotation for easy access while elevated
- Variable jacking widths for difficult areas
- Height adjustable crawlers give excellent ground clearance



HigherAccess
Spider Lift Hire Specialists

08456 044 054 www.higheraccess.co.uk

Teupen Leo 25T

Working Height (max.) (m)	25.00m
Platform Height (max.) (m)	23.00m
Lateral Outreach (max.) with 80kg	15.50
with 200kg	12.50
Safe Load on Cage (kg)	200kg / 80kg
Cage Rotation	180°
Range of Rotation	450°
Limited Range of Rotation - one side narrow	220°
Limited Range of Rotation - both sides narrow	40°
Cage Dimensions (L x W x H) (m)	1.2 x 0.8 x 1.1m
Removable Cage	Y
Length in Travelling Position with Cage (min.) (m)	7.22m
Width in Travelling Position (min.) (m)	1.78m
Height in Travelling Position (min.) (m)	1.98m
Net Weight (kg)	3,000
Setup Width - Standard - to outside edge of outrigger foot (m)	5.36m
Setup Length - Standard - to outside edge of outrigger foot (m)	5.70m
Setup Width - One Side Narrow - to outside edge of outrigger foot (m)	4.29m
Setup Width - Both Sides Narrow - to outside edge of outrigger foot (m)	3.24m
Power Supply	Diesel
	240V Electric - 13A 3 Pin Plug
Climbing Ability	30%
Setup Ability	28%
Maximum Point Load (N)	21,800
Load on 400mm pad (N/cm ²)	13.625
Load on 600mm pad (N/cm ²)	6.056
Load on 800mm pad (N/cm ²)	3.406
Live load in Setup Position (KN/m ²)	0.957
Traffic Live Load (Kn/M ²)	2.281
Adjustable Track Height/Width	Manual, approx. 0.2m height adjustment
Drive Control	Umbilical remote control
Drive Speed	1.50km/h

DISCLAIMER

The information on this page is for guidance only and is subject to change without prior notice in line with the Manufacturer's Development Program. Higher Access and its suppliers cannot be held liable for any damage or injury sustained through use of this information to specify equipment.