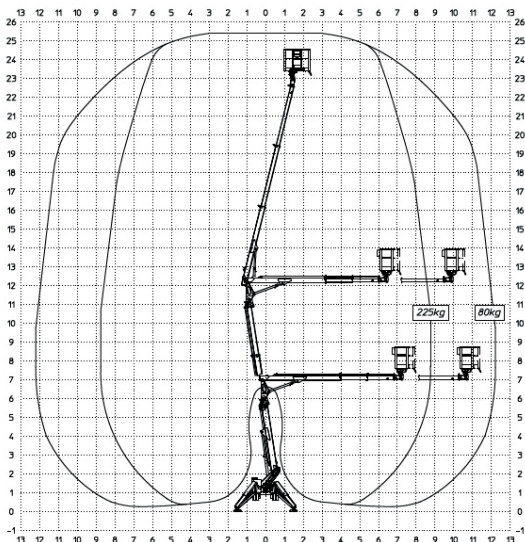


Multitel SMX250

Lightweight, flexible & compact.



- Dual power source - mains electric or diesel - can work indoors or out
- Lightest 25m machine available - excellent for working internally, craning into position
- Compact transport dimensions - will fit through a single doorway



HigherAccess
Spider Lift Hire Specialists

08456 044 054 www.higheraccess.co.uk

Multitel SMX250

Working Height (m)	25.2m
Platform Height (m)	23.2m
Lateral Outreach (m)	11.6m
Safe Load on Cage (kg) (max)	200 with cargo
Cage Rotation (degrees)	180°
Range of Rotation (degrees)	360°
Limited Range of Rotation (one side narrow)	Limited outreach only
Limited Range of Rotation (both sides narrow)	Limited outreach only
Cage Dimensions (L x W x H) (m)	1.4 x 0.7 x 1.1m
Removable Cage	Y
Length in Travelling Position with Cage (m)	5.12m
Length in Travelling Position without Cage (m)	4.87m
Width in Travelling Position with Cage (m)	1.10m
Width in Travelling Position without Cage (m)	0.98m
Height in Travelling Position (m)	1.92m
Net Weight (kg)	2,660
Setup Width - standard - to outside edge (m)	3.82m
Setup Length - standard - to outside edge (m)	4.03m
Setup Width - 1 side narrow - to outside edge (m)	3.48m
Setup Width - both sides narrow - to o/s edge (m)	3.15m
Power Supply	Diesel/240V
Climbing Ability	25%
Setup Ability	25%
Maximum Point Load (N)	17,500
Load on 400mm Pad (N/cm ²)	10.938
Load on 600mm Pad (N/cm ²)	4.861
Load on 800mm Pad (N/cm ²)	2.734
Live Load in Setup Position (kN/m ²)	1.695
Traffic Live Load (kN/m ²)	4.631
Adjustable Track Height/Width	N
Drive Control	Umbilical
Drive Speed	1.40km/h

DISCLAIMER

The information on this page is for guidance only and is subject to change without prior notice in line with the Manufacturer's Development Program. Higher Access and its suppliers cannot be held liable for any damage or injury sustained through use of this information to specify equipment.