

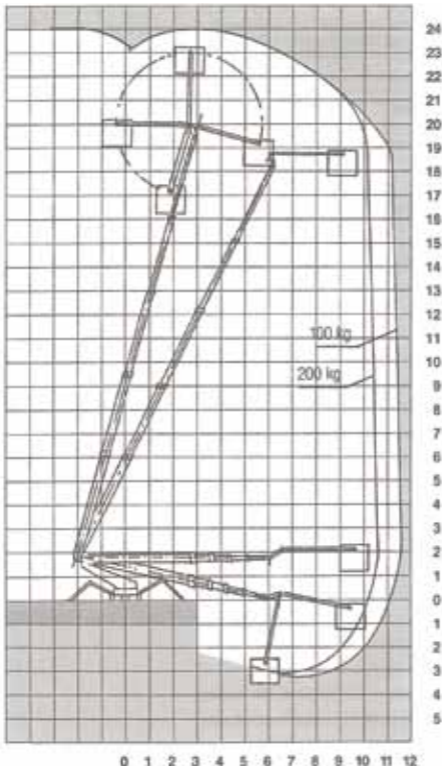


## TS24

Flexible & economical.



- Fully electric - recommended for internal use
- 2 speed drive covers ground quickly - very efficient
- Excellent outreach due to long fly jib



# Falck Schmidt TS24

Working Height (max.) (m)	23.8
Platform Height (max.) (m)	21.9
Lateral Outreach (max.) (m)	10.5
Safe Load on Cage (max.) (kg)	200
Cage Rotation	None
Range of Rotation	370°
Limited Range of Rotation - one side narrow	370°
Limited Range of Rotation - both sides narrow	370°
Cage Dimensions (L x W x H) (m)	1.2 x 0.7 x 1.12
Removable Cage	Y
Length in Travelling Position with Cage (min.) (m)	6.10
Length in Travelling Position without Cage (min.) (m)	6.10
Width in Travelling Position with Cage (min.)	N/A
Width in Travelling Position without Cage (min.) (m)	0.80
Height in Travelling Position (min.) (m)	1.98
Net Weight (kg)	3,200
Setup Width - Standard - to outside edge of outrigger foot (m)	4.30
Setup Length - Standard - to outside edge of outrigger foot (m)	4.30
Setup Width - One Side Narrow - to outside edge of outrigger foot (m)	3.92
Setup Width - Both Sides Narrow - to outside edge of outrigger foot (m)	N/A
Power Supply - model specific, please ask.	240V/Battery
Climbing Ability	14%
Setup Ability	26%
Maximum Point Load (N)	16,000
Load on 400mm Pad (N/cm <sup>2</sup> )	10.000
Load on 600mm Pad (N/cm <sup>2</sup> )	4.444
Load on 800mm Pad (N/cm <sup>2</sup> )	2.500
Live Load in Setup Position (KN/m <sup>2</sup> )	1.631
Traffic Live Load (KN/m <sup>2</sup> )	3.747
Drive Control	Steering Handle
Adjustable Track Wheel Width	Y

## DISCLAIMER

The information on this page is for guidance only and is subject to change without prior notice in line with the Manufacturer's Development Program. Higher Access and its suppliers cannot be held liable for any damage or injury sustained through use of this information to specify equipment.